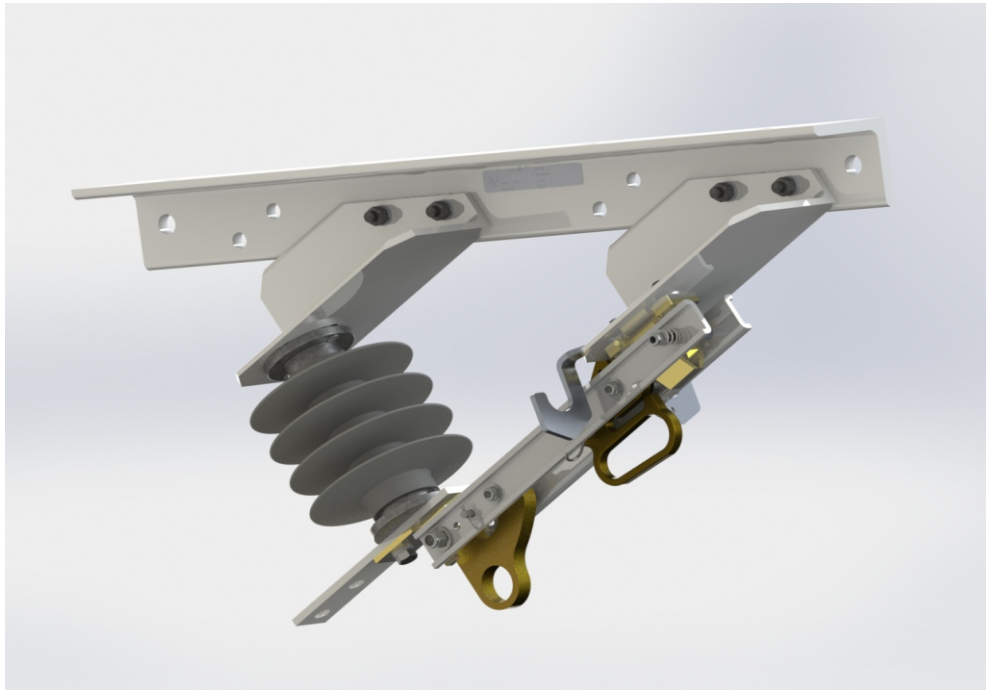




ALUMA-FORM®

# Line Tap Switch



## Features of Aluma-Form Line Tap Switch

15kv, 28kv and 35kv Ratings Available in both 600A and 900A  
Available in Porcelain and Polymer  
Silver Plated Blades and Hinges  
Tin Plated Contacts  
Best Electrical Conductivity  
Corrosion Resistant Style Available  
Multiple Hanger Options  
Pull to Open and Pull to Close Optional Handle



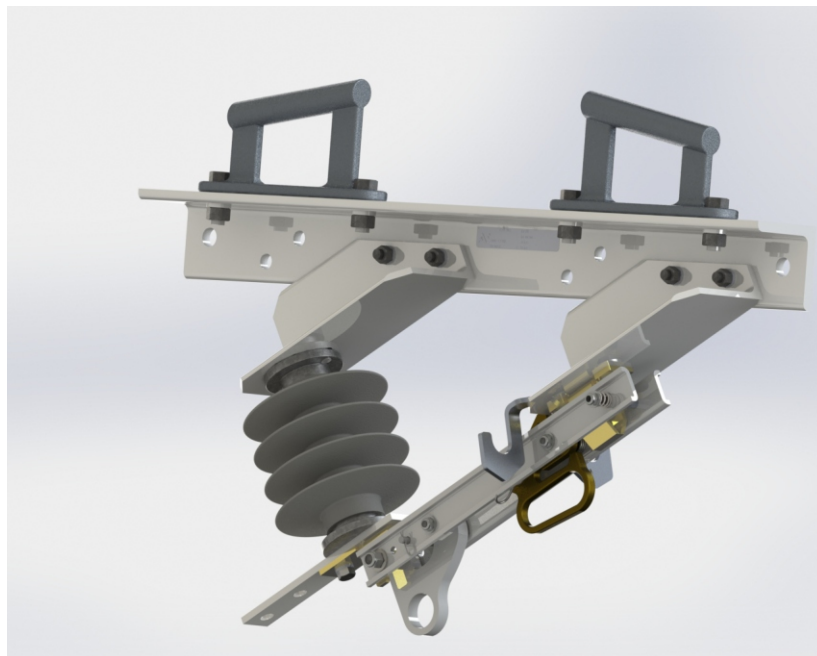
ALUMA-FORM®

# Line Tap Switch

## Catalog Number System

HDS - 600A - LT - 15 S - 110 - N - 50 - L

Disconnect Switch	Amperage Rating	Switch Type	Insulation Rating	Insulator Material	Insulator BIL Rating	Terminal Options	Hanger Options	Other Options
	600A	LT - Line Tap	15-15kV	P- Porcelain	110 - 110kV BIL	P - Aluminum Parallel Groove Clamp H - SS Captive Hdwe - (4) 1/2x2-1/2" Bolt, Washers & Nut CR - Corrosion Resistant (SST, Hardware, Alum Insulator Posts, SST Loadbuster Hook) BT - Bridge Type Clamp N - None	50 - 1/2" Hangers	L- Pull to Open / Pull to Close Lever
	900A		27-27kV	S- Silicone	125 - 125kV BIL		75 - 3/4" Hangers	
			35-35kV		150 - 150kV BIL		100 - 1" Hangers	
					200 - 200kV BIL			





ALUMA-FORM®

# Line Tap Switch

## Technical Data

Kv Rating	Rated BIL	Amp	Material	Dim A	Dim B	Dim C	Switch Electrical Ratings	
							Mom. kA	3 Sec kA
15	110	600	Silicon	30"	15.5"	8.5"	40	25
15	110	900	Silicon	30"	15.5"	8.5"	40	25
27	125	600	Silicon	34"	17"	8.5"	40	25
27	125	900	Silicon	34"	17"	8.5"	40	25
27	150	600	Silicon	36"	18"	8.5"	40	25
27	150	900	Silicon	36"	18"	8.5"	40	25
35	150	600	Silicon	36"	18"	8.5"	40	25
35	150	900	Silicon	36"	18"	8.5"	40	25

